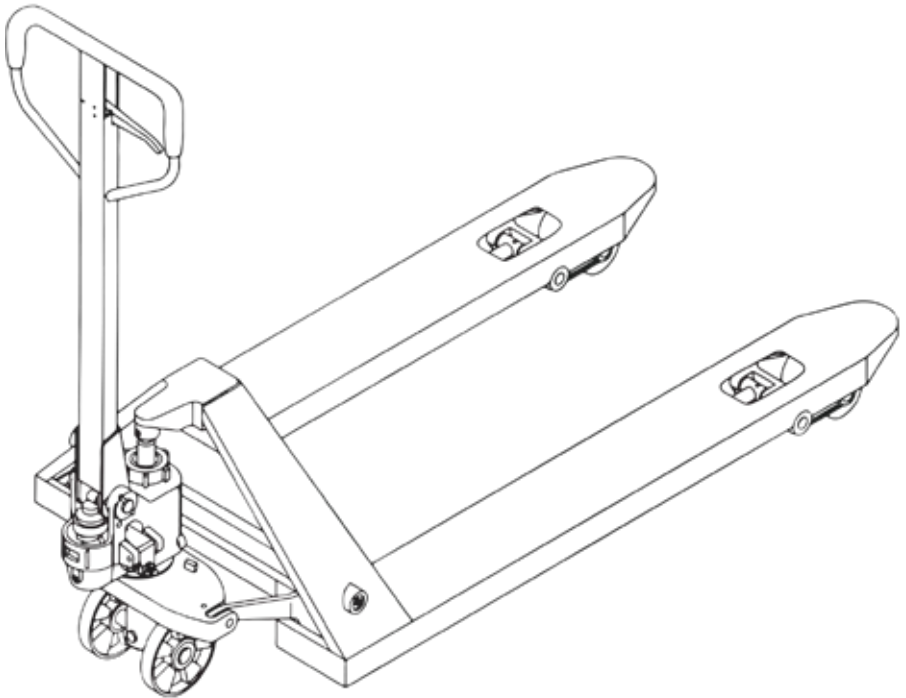




601, Western Industrial Estate, Dublin 12, D12 N9PR  
t: +353 1 458 4836 | w: www.prolift.ie

Operate Manual & Parts Manual  
Hand Pallet Truck with Intergrated Pump  
HPT 25 / HTP 30 / HTP 25Q



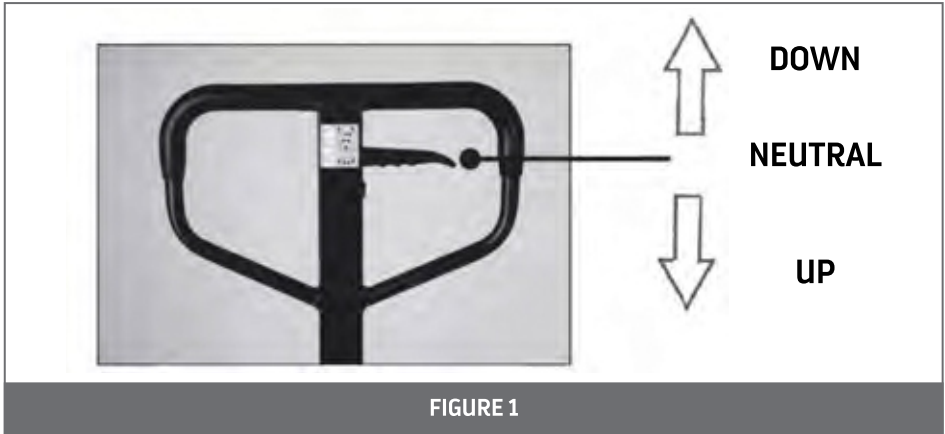
**Caution:** Please read and comprehend this operating manual and all of the warning signs on the truck before use hand pallet truck.

# CONTENT

S.No.	Description	Page No
1	Operating Pallet Truck	1
2	Troubleshooting	2-3
3	Warning	4-5
4	Chassis	6-7
5	Steering	8
6	Handle (Square with Rubber)	9
7	ACBF Pump (HPT25 / 30)	10
8	ACQ Pump (HPT250)	11
9	ACBF Pump (HP005)	12-13

# OPERATING PALLET TRUCK

To raise the forks, place handle lever in UP position position (bottom part of the handle slot). See **Figure 1**.



To lower forks, pull lever to DOWN position (upper part of the slot).  
To freely move the handle, set the lever in NEUTRAL (center notch of the slot).

## **TO LIFT A LOAD:**

1. Lower forks to lowest position.
2. Insert forks under load or into pallet.
3. Place lever in UP position (bottom part of the slot).
4. Move handles up and down until forks reach desired height.

## **TO MOVE A LOAD:**

1. Place lever in NEUTRAL position (center notch of the slot).
2. Pull or push to desired location.

## **TO LOWER A LOAD:**

1. Pull lever to the DOWN position (upper pCOPP of the slot).
2. Pull forks away from load.

## **CLEANING RELIEF VALVE**

1. Over time, relief valve may become clogged with debris and will not work properly.
2. To clean relief valve, flush our hydraulic system as follows:
3. Pump handle quickly, raising pallet truck to full extent.
4. Then, quickly release pumping action.

# TROUBLESHOOTING

Possible problems could arise in the operation of your hydraulic pallet truck. Their probable cause(s) and corrective actions(s) follow:

Condition	Probable Causes	Corrective Action
<b>Hydraulic unit does not lift</b>	Oil low in tank	Make sure there is no leakage from valve and add oil.
	Steel ball not seated in hydraulic unit	See Clearing Relief Valve in this manual.
	Worn O-ring in ram cylinder	Consult authorized service centre.
<b>Once lifted truck lowers by itself</b>	Steel ball not seated in hydraulic unit	See Clearing Relief Valve in this manual.
	Worn O-ring in ram cylinder	See Clearing Relief Valve in this manual.
	Relief valve not seated properly	See Clearing Relief Valve in this manual.
	Relief valve not adjusted properly	Reload truck within load capacity and adjust valve by pressure adjustment screw.
	Oil leakage from each valve	Tighten plug of each valve.
<b>Fork does not lower</b>	Cam Broken	Replace cam chain.
	UP-DOWN cam nut out of adjustment	Refer to Adjusting UP- Down Cam in this manual.
	Broken fork rods and linkage	Replace broken parts.
<b>Lever does not set at NEUTRAL position</b>	UP-DOWN cam nut out of adjustment	Refer to Adjusting UP- Down Cam in this manual.

## ADJUSTING UP-DOWN CAM



DO NOT adjust the up/down lever control using the lock nut at the end of the handle chain. If nylon locking threads are removed from the screw threads, rolling vibration will cause the nut to unscrew and fall off, leaving the up/down lever unusable.



Use proper set screw and lock nut adjustment located on the side of the pump. This feature was designed to ease the pallet truck adjustment. Tools required are: flat screwdriver and a 14mm wrench.

FIGURE 2

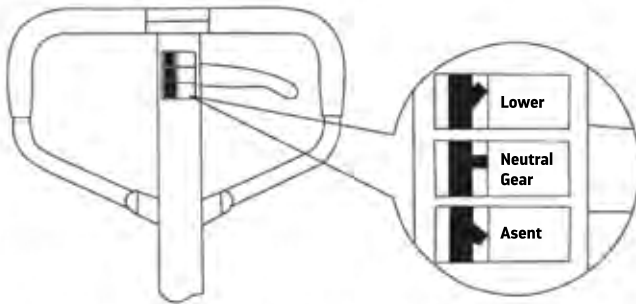
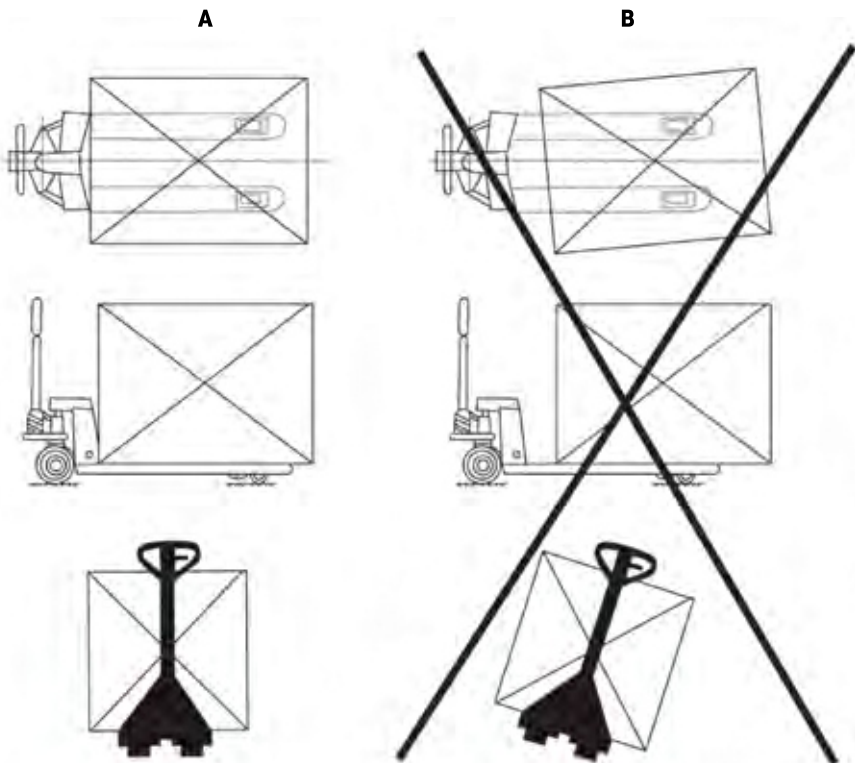


FIGURE 3



# WARNING!

- Read and understand the entire operators manual before using the pallet truck.
- Dont load pallet truck beyond rated capacity of 2,500Kgs (5,500 lbs) for the standard models and 3,000 Kgs (6,000 lbs) for heavy-duty models.
- Secure load before transporting.
- Keep the load centered on the pallet.
- Dont operate loaded pallrt truck on ramps or inclines.
- Always wear appropriate safety shoes.
- Never leave a loaded pallet truck unattended in the raised position; always lower load to the floor.

## PALLET TRUCK ASSEMBLY

Note:Individual truck are assembled and ready to use. Pallet truck purchased in crate quantities (6 units to a crate) require some assembly.

Tools needed for assembly: Hammer, Flat Screwdriver, 14 mm Wrench

### TO ATTACH HANDLE ASSEMBLY TO THE FRAME:



1.  
**\*\*\* IMPORTANT - SAFETY \*\*\***  
Verify that spring safety pin is in place. The pin should be well rested in the holes situated on each side of the pump housing. If the safety pin is not reeste properly in in one of the holes, put pressure on the spring using a C clamp pushing down on the pump stem. Once pressure is relieved on the pin, reinsert properly and remove clamp slowly.



2.  
Insert handle pin into cor responding holes and using a hammer, drive in one spring pin on one side only.



3.  
Insert handle pin without the handle and verify that the center hole is facing you.



4.  
If handle pins center hole is facing away from you, insert pin from other side.  
**\*\*\* IMPORTANT - FACT\*\*\***  
The up/down levers chain passes through this center hole. If left this way, the chain will have an S from and be under too much tension, making the up/down lever difficult to use accurately.



**5. IMPORTANT - CHAIN**  
Before this step, make sure to feed the chain on the outside of the piston stem roller (see yellow arrow). If left in its proper position, it will not be possible to insert the handle pin and chain, breakage may occur. Align handle holes with pump housing holes and push through handle pin (see red arrow)



**6.**  
Make sure that handle pin is completely through the handle and resting on the other side.



**7.**  
Pull down on the handle to release the tension on the safety pin. CAREFULLY remove the safety pin



**8.**  
Feed the chain and nut first back inside the handle THROUGH the handle pins center hole. **\*\*\* IMPORTANT - TIP \*\*\***  
Release the up/down lever to its lowest position to make the process easier.



**9.**  
Once the chain is in the proper position, check to see that it moves freely and that it is not obstructed.



**10.**  
Using both hands, push on the valve cam to raise the hook inside the housing and feed the end of the chain in the cam. (see image at right)

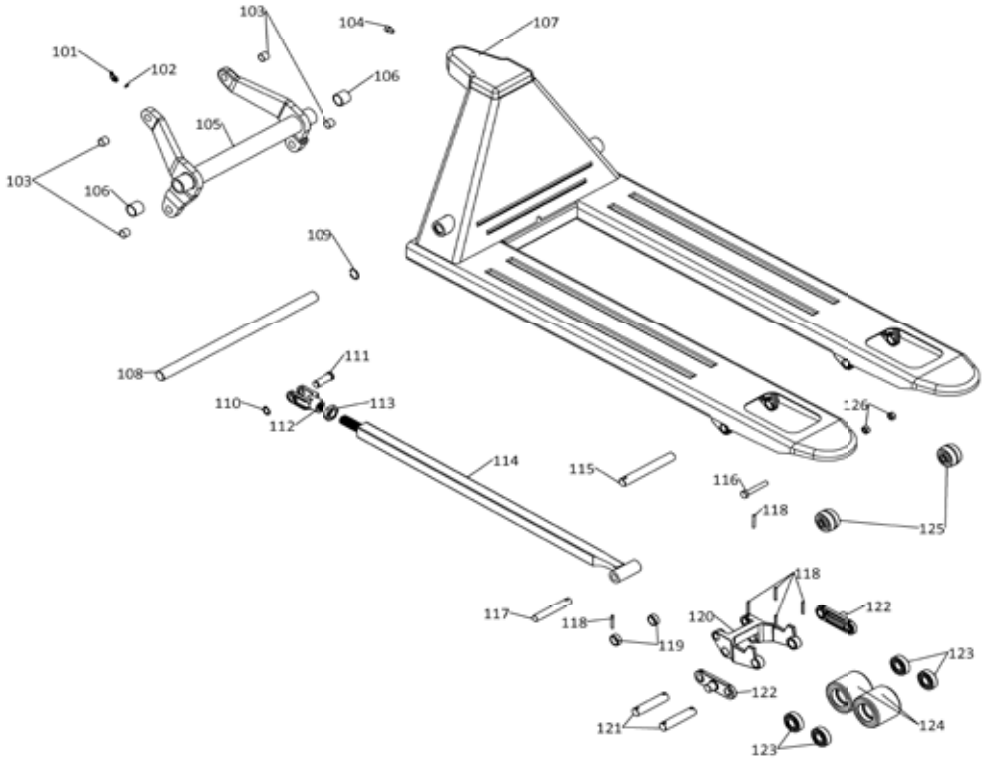


**11.**  
Pump the level a few times to raise the forks. Put the up/down lever to its NEUTRAL position. Using a 14mm wrench and a flat screwdriver, adjust the valve cam so that the forks don't lower or rise (if handle is pumped) at this position.



**12. \*\*\* IMPORTANT - FINAL CHECK \*\*\***  
Test all the features of the pallet truck before this step. The handle should be pumped with full strokes to prime and eliminate air in the system. The up/down lever should be checked at the handles lowest position for this puts the most tension on the chain. Once the pallet truck is adjusted properly and is performing well, drive in the second spring pin using a hammer.

# CHASSIS



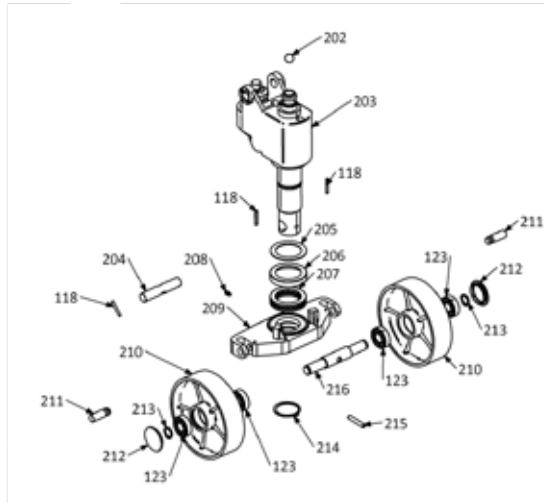
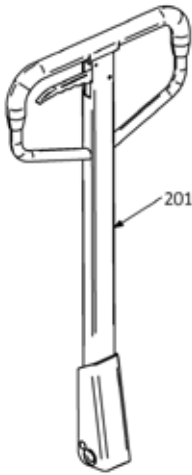
S. No.	Part No.	Description	Qty
101	HW011	Grease Nipple M6x45 degree	1
102	HW019	M6-Silicon Ring	1
103	HW013	Bush-PTFE-18x16x15	4
104	HW001	Bolt-M8x12-LN-Auto Black	1
105	LA001	Lifting Arm-540	1
106	HW012	Bush-PTFE-29x25x25	2
107	CH001	Chassis-540x1150x2.8 mm	1



# CHASSIS

S. No.	Part No.	Description	Qty
108	AX005	Axle-Lifting Arm	1
109	HW002	Circlip-Internal-25mm-Autoblack	2
110	HW010	Circlip-External-16mm	4
111	AX007	Axle-Yoke	2
112	GN006	Yoke-Casting	2
113	HW009	Nut-Lock-Yoke-M22x1.5-10mm	2
114	PR001	Push Rod-890 (for 1150mm fork length)	2
114	PR002	Push Rod (for 800mm fork length)	2
114	PR003	Push Rod (for 900mm fork length)	2
114	PR004	Push Rod (for 950mm fork length)	2
114	PR005	Push Rod (for 1000mm fork length)	2
114	PR006	Push Rod (for 1500mm fork length)	2
114	PR007	Push Rod (for 1800mm fork length)	2
114	PR008	Push Rod (for 2000mm fork length)	2
115	AX002	Axle-Bracket	2
116	HW004	Bolt-M10x1.5-Hex-70x26	2
117	AX004	Axle-Bush Push Rod	2
118	HW003	Roll Pin-5x35-Auto black	12
119	GN	Spacer Ring	4
120	BR001	Bracket-Loading Wheel	2
121	AX001	Axle-Wheel-Tandem Loading	4
121	AX011	Axle-Wheel-Single Loading	2
122	GN001	Coupler-Loading Wheel	4
123	HW008	Bearing-6204	8
124	WH001	Wheel-Loading-Tandem PU-80x70	4
124	WH004	Wheel-loading-Tandem-Nylon-80x70	4
124	WH011	Wheel-loading-Single-PU-80x93	2
124	WH012	Wheel-loading-Single-Nylon-80x93	2
125	WH002	Wheel-Guide	2
126	HW005	Nut-Nylock-M10x1.5	2

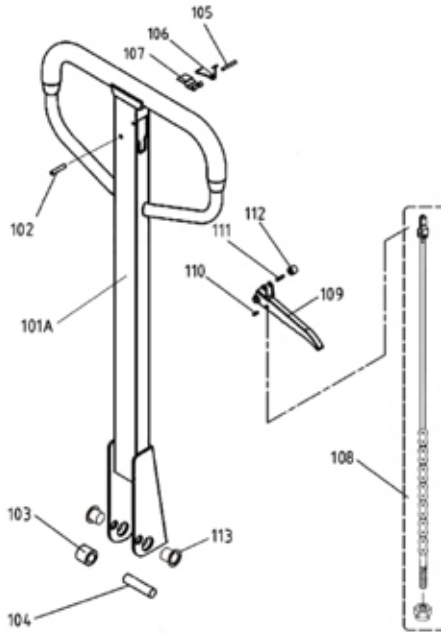
# STEERING



S. No.	Part No.	Description	Qty
201	HN001	Handle-Square-Plastic Moulded	1
202	HW014	Steel Ball-Pump 19mm	1
203	HP003	ACBF Pump	1
203	HP005	ACBF (New) Pump	1
203	HP004	ACQ Pump	1
204	AX008	Axle-Handle-Base	1
204	AX010	Axle-Handle-Base 90° (for ACQ Pump)	1
205	HW016	Washer-56x78x2mm	1
206	HP002	Bearing Cap	1
207	HW015	Bearing-51111	1
208	HW018	Grease Nipple M6-Straight	1
209	BP001	Base Plate-Pump	1
210	WH003	Wheel-Front-PU-200X50	2
210	WH005	Wheel-Front-Nylon-200X50	2
210	WH010	Wheel-Front-Rubber-200X50	2
211	AX006	Axle-Grooved-Base Plate	2
212	GN005	Cap-PP-Wheel-Front	2
213	HW006	Circlip-External-20mm-Autoblack	2
214	HW017	Circlip-External-52mm	1
215	HW007	Roll Pin-8x50-Auto black	1
216	AX003	Axle-Front Wheel	1
118	HW003	Roll Pin-5x35-Auto black	3
123	HW008	Bearing-6204	4

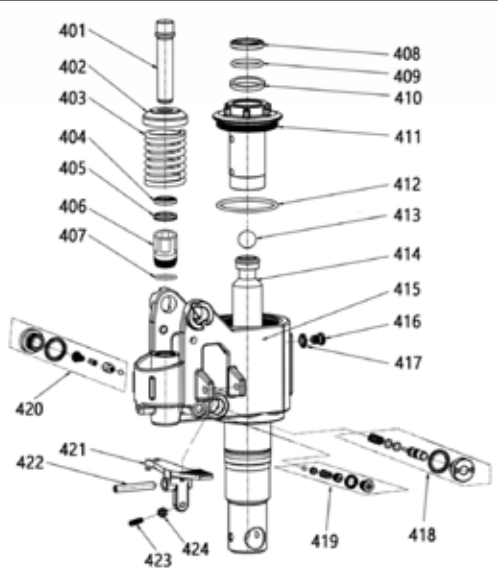
# HANDLE

(SQUARE WITH RUBBER)



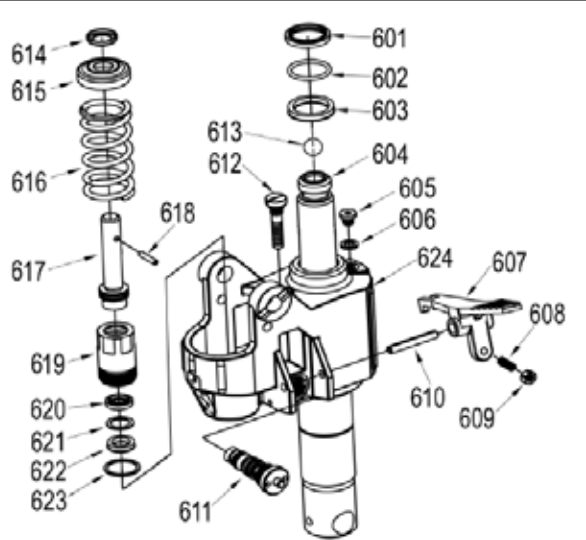
S. No.	Part No.	Description	Qty
101	HN001-00	Handle body	1
102	HW026	Roll Pin-Lever-Ø6X30	1
103	HN001-06	Rocker Piston	1
104	AX009	Axle-Rocker	1
105	HW027	Roll Pin-Spring-Ø4x30	1
106	HN001-07	Torsional spring	1
107	HN001-08	Clip Plate	1
108	HN001-09-00	Connecting rod	1
		Chain	1
		Swing bolt/M5	1
		Nut/M5	1
		Clamp	1
		Rivet/3x6	1
109	HN001-07	Lever-Molded	1
110	HW029	Roll Pin-Clamp-Ø4x13	1
111	HW028	Roll Pin-Roller-Ø4x17	1
112	HN001-08	Roller	1
113	HW021	Bush PTFE -Handle-Base	2

# ACBF PUMP (HPT25 /30)



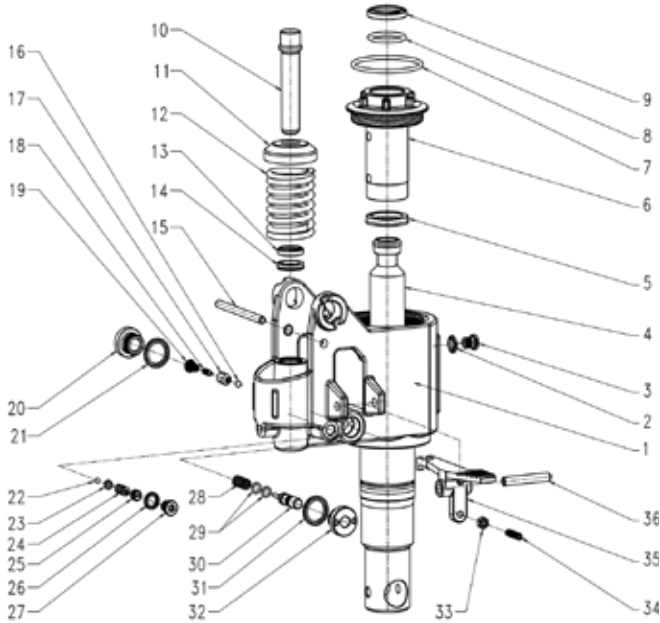
S. No.	Part No.	Description		Qty
401	HP003-01	Small pump core	Piston-Pumping	1
402	HP003-02	Cover of spring	Cap-Spring	1
403	HP003-03	Big spring cap	Spring	1
404	HP003-04	Dust ring Ø18*26*4.5/6		1
405	HP003-05	Seal washer Ø18*26*5		1
406	HP003-06	Small cylinder		1
407	HP003-07	Copper gasket		1
408	HP003-08	Dust ring Ø35		1
409	HP003-09	O-ring Ø35		1
410	HP003-10	Seal washer Ø35		1
411	HP003-11	Slide bushing		1
412	HP003-12	O-ring		1
413	HW014	Steel ball Ø19		1
414	HP003-13	Piston rod		1
415	HP003-14	Pump body		1
416	HP003-15	Bolt		2
417	HP003-16	Seal		2
418	HP003-17	Relief valve		1
419	HP003-18	Safety valve		1
420	HP003-19	Check valve		1
421	HP003-20	Lever plate		1
422	HP003-21	Spring pin		1
423	HP003-22	Bolt		1
424	HP003-23	Nut		1

# ACQ PUMP (HPT25Q)



S. No.	Part No.	Description	Qty
601	HP004-01	Dust ring Ø35	1
602	HP004-02	O-ring Ø41*3.5	1
603	HP004-03	Seal washer Ø35	1
604	HP004-04	Piston rod Ø35	1
605	HP004-05	Plug	1
606	HP004-06	Washer Ø10	1
607	HP004-07	Switch board	1
608	HP004-08	Screw M6*25	1
609	HP004-09	Nut M6	1
610	HP004-10	Spring pin Ø8*55	1
611	HP004-11	Integrated valve assy.	1
612	HP004-12	Safety valve assy.	1
613	HP004-13	Steel ball Ø19	1
614	HP004-14	Pan seat	1
615	HP004-15	Spring cap	1
616	HP004-16	Spring	1
617	HP004-17	Small pump core	1
618	HP004-18	Spring pin Ø5*25	1
619	HP004-19	Small oil cylinder	1
620	HP004-20	Dust ring Ø18	1
621	HP004-21	Retaining ring	1
622	HP004-22	Seal washer Ø18	1
623	HP004-23	Washer Ø34*28.5*2	1
624	HP004-24	Pump body	1

# ACBF (NEW) PUMP (HP005)



S. No.	Part No.	Description	Qty
1	HP005-01	Pump body	1
2	HP005-02	Washer 10*2	1
3	HP005-03	Screw M10*1*9.5	1
4	HP005-04	Piston rod Ø35*263	1
5	HP005-05	Seal washer Ø35*43*7	1
6	HP005-06	Slide bushing Ø35	1
7	HP005-07	O-rings Ø65*2.65	1
8	HP005-08	O-rings Ø34.5*3.55	1
9	HP005-09	Dust ring Ø35*43*5/6.5	1
10	HP005-10	Small pump core Ø18*97	1
11	HP005-11	Cover of spring Ø49*2*15	1

S. No.	Part No.	Description	Qty
12	HP005-12	Big spring cap Ø5.5*48*115	1
13	HP005-13	Dust ring Ø18*26*4.5/6	1
14	HP005-14	Seal washer Ø18*26*5	1
15	HP005-15	Blocking bar Ø7*95	1
16	HP005-16	Steel ball Ø6.35	1
17	HP005-17	Valve body 4.9*11	1
18	HP005-18	Core for valve 4.8*19	1
19	HP005-19	Spring 0.7*20	1
20	HP005-20	Plug M20*1.5*12	1
21	HP005-21	Washer 20*2	1
22	HP005-22	Steel ball Ø5	1
23	HP005-23	Steel ball pad Ø8*8	1
24	HP005-24	Safety valve spring Ø2*8*16.5	1
25	HP005-25	Adjust screw M10*1*8.5	1
26	HP005-26	Washer Ø10*2	1
27	HP005-27	Screw M10*1*9.5	1
28	HP005-28	Firing pin spring 1.3*9.5*22	1
29	HP005-29	O-rings Ø6.9*1.8	2
30	HP005-30	Firing pin Ø10*52	1
31	HP005-31	Washer Ø20*2	1
32	HP005-32	Firing pin seat M20*1.5*18	1
33	HP005-33	Nut M6*1	1
34	HP005-34	Screw M6*1*25	1
35	HP005-35	3# lever plate	1
36	HP005-36	Spring pin Ø8*50	1
***	HP005-37	Seal kits(Item 5/8/9/13/14)	1
***	HP005-38	Check valve assy. (Item 16~21)	1
***	HP005-39	Safety valve assy.(Item 22~27)	1
***	HP005-40	Relief valve assy.(Item 28~32)	1



601, Western Industrial Estate, Dublin 12, D12 N8PR  
t: +353 1 458 4836 | w: [www.prolift.ie](http://www.prolift.ie)

---

**Caution:** Please read and comprehend this operating manual and all of the warning signs on the truck before use hand pallet truck.