



EUROSYSTEM®

Aluminium and **steel** hollow profile
for overhead handling system
with loads of 60 to 2,000 kg



Product Distributed in Ireland by:



601, Western Industrial Estate,
Dublin 12, Ireland T: + 353 (0)1
4584836 E: sales@prolift.ie

www.prolift.ie



LIFTING EQUIPMENT

www.verlinde.com

Ref : 11 2016 534 GB

EUROSYSTEM ALU[®]

Aluminium hollow profile overhead handling system for loads of 60 to 2,000 kg

The Aluminium Eurosystem represents a new generation of hollow profile handling systems. This innovative solution presents the combined advantages of conventional steel and aluminium hollow profile.

> Ergonomic

Light rails means users can very easily and effortlessly handle heavy and cumbersome loads.

> Accurate

Accuracy is ensured through high quality manufacture and smooth movements.

> Economical

Reduce weight of supporting structure.

> Anti-corrosion

The aluminium profiles are externally and internally anodised.

> Safety

The beam is guaranteed without welding.

> Technological

The beam is the result of the latest innovations in cold extrusion and structure optimisation.

> Practical

The beam is compatible with all ITEM standard accessories.

> Lasting

Strong resistancy to wear and tear is the result of anodisation and the roller materials.

> Silence

Operates silently due to the precise manufacture of the movement surface.

> Aesthetics





EUROSYSTEM ALU[®]

Aluminium hollow profile overhead handling system for loads of 60 to 2,000 kg

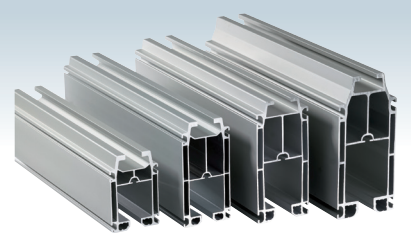
Eurosystem ALU in figures:

- > Materials: **6063-T6** according to EN-AW standard
- > 20 micron anodisation: **A6C0**
- > Extrusion tolerance of beams according to standard: **EN 12020**
- > Complies with applicable regulations according to standard: **FEM 9.771**

2

4 sizes of beam.

- > AL06, 6.5 kg/m, up to 320 kg
- > AL08, 8 kg/m, up to 500 kg
- > AL10, 10.6 kg/m, up to 2,000 kg
- > AL14, 14.5 kg/m, up to 2,000 kg



4

3

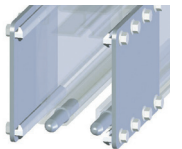
6

5

3

Joining of rails.

A perfect cut, pin pointer, 16 point locking system which is easy to implement : one of the features that make the difference.

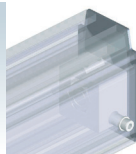


1

1

Locking plates.

They can be dismantled, they act as a buffer, dust protection and they complete the attractiveness of the installation.



4

Suspensions.

It means that the whole handling system can be fixed to a lifting structure. Several suspension types are available depending on the type of beam used and the type of the host structure.



5

Wide range of lifting devices associated

Hand chain hoist VHR for loads of 250 to 5,000 kg : Machined chain sprocket and gears provide smoother, more efficient operation. 3 meters standard lift. Hand chain is 0.5 meters less than lift chain.

VHR's compact design offers safety together with reduced weight. Ideal for construction and maintenance applications.



Lifting functions are fulfilled by EUROCHAIN VR hoists with a variety of load capacities and lifting speeds. These hoists can be equipped with either a manual or an electric trolleys for horizontal movement.

- > Load capacity from 63 à 2,000 kg.
- > Lifting height from 3 meters (standard) and up to 30 m.
- > Two lifting speeds.
- > A number of optional features are available for these hoists (remote control system, hook version and stainless steel chain, etc).

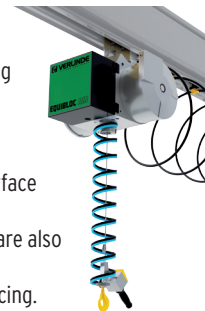


Verlinde, EQUIBLOC AIR pneumatic load balancers come with the following standard equipment:

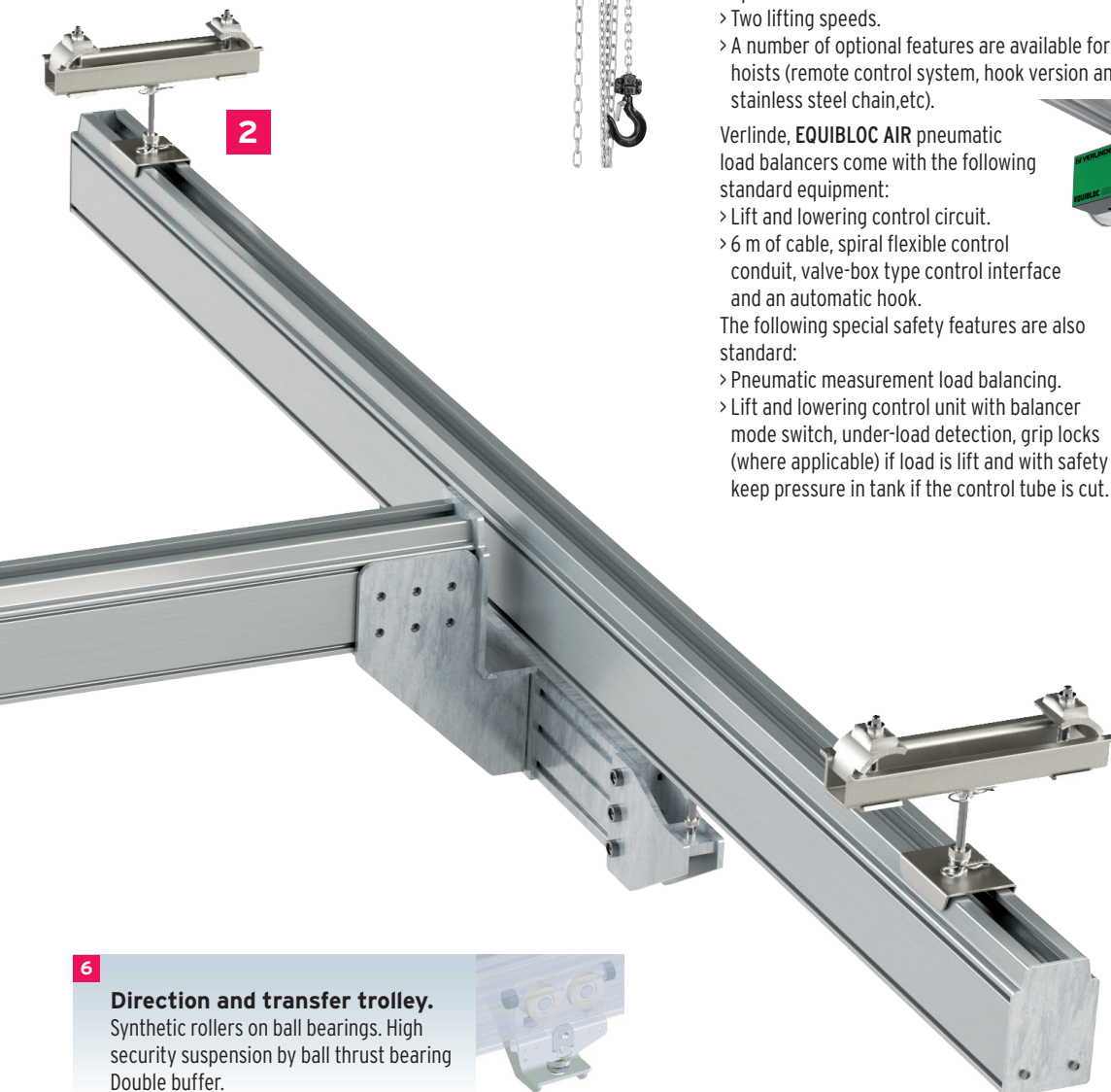
- > Lift and lowering control circuit.
- > 6 m of cable, spiral flexible control conduit, valve-box type control interface and an automatic hook.

The following special safety features are also standard:

- > Pneumatic measurement load balancing.
- > Lift and lowering control unit with balancer mode switch, under-load detection, grip locks (where applicable) if load is lift and with safety valve to keep pressure in tank if the control tube is cut.



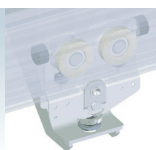
2



6

Direction and transfer trolley.

Synthetic rollers on ball bearings. High security suspension by ball thrust bearing Double buffer.

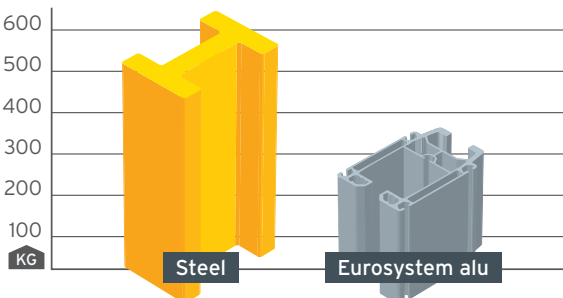
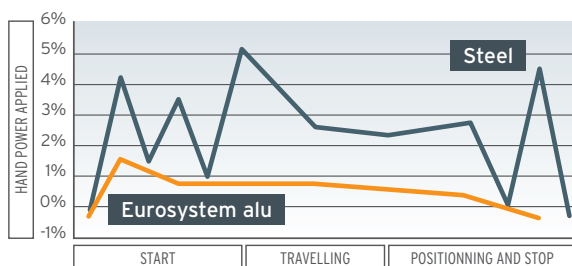


Better workstation ergonomics and increased productivity.

Compared with steel rails, when manually moving loads, the movement coefficient of the trolley rollers is greatly reduced in order to minimise operator effort.

Reduced cost of supporting structures.

- > 2 times lighter than its steel equivalent.
- > Easy to install and use.
- > Economical for lifting structures.



EUROSYSTEM ALU[®]

Aluminium hollow profile overhead handling system for loads of 60 to 2,000 kg



Single girder suspended or encasted crane for loads up to 2,000 kg

- > To cover the largest surfaces in 3 dimensions.
- > Ready to be installed to optimise lifting height.

Options:

- > Direction and/or motorised transfer trolleys.
- > Parallel supply to beam by integral conductor.
- > RAL paint coating.

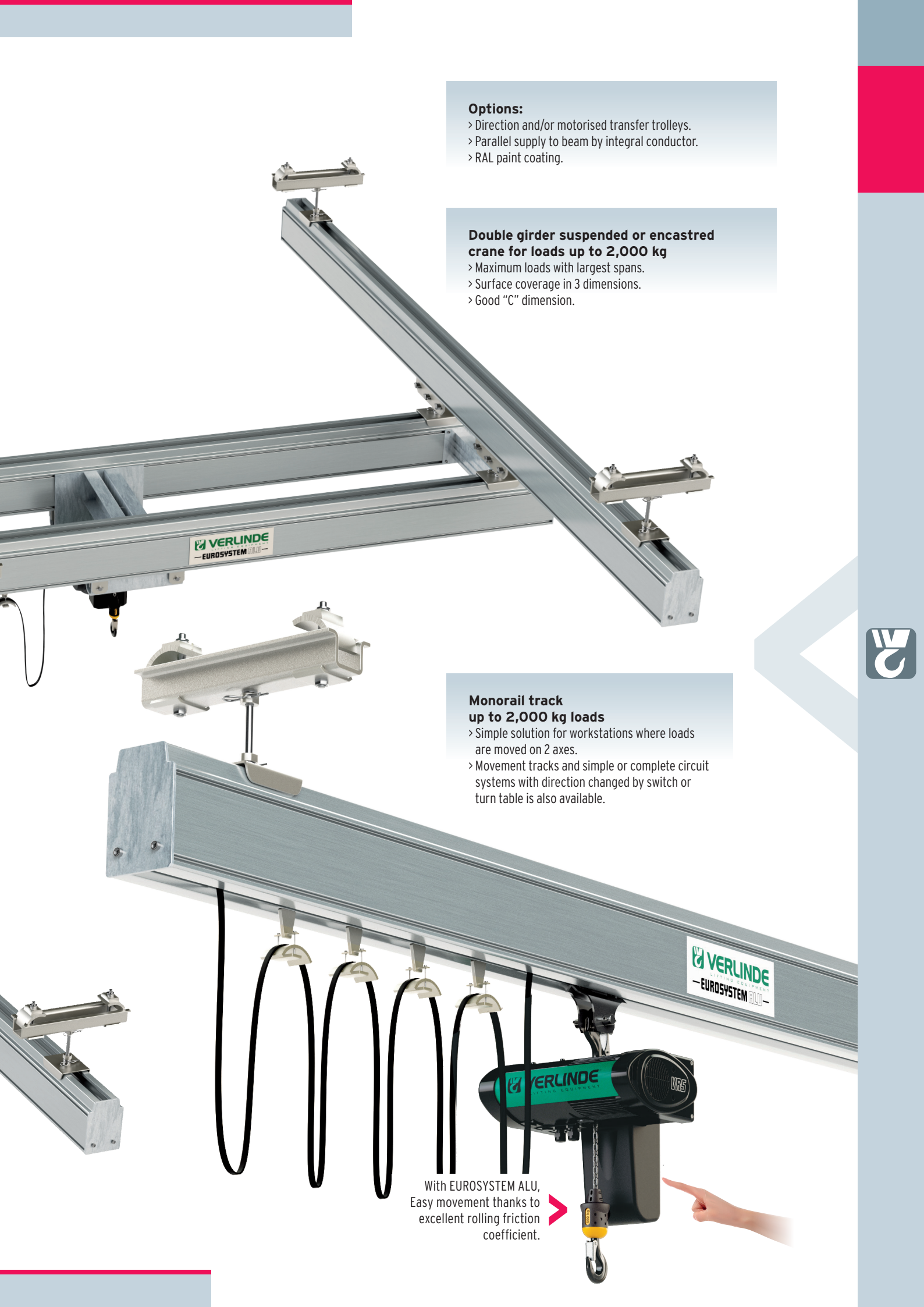
Double girder suspended or encasted crane for loads up to 2,000 kg

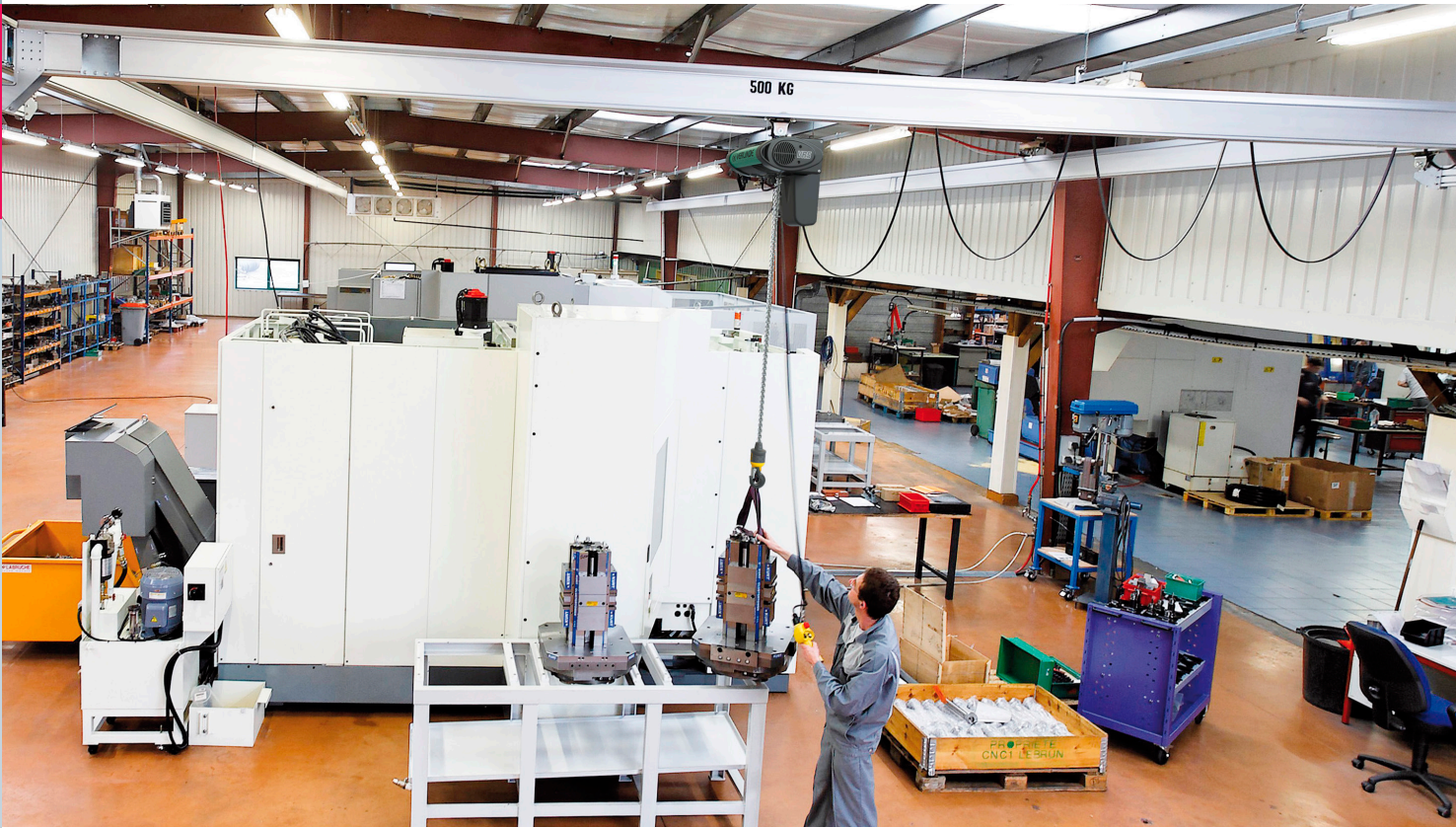
- > Maximum loads with largest spans.
- > Surface coverage in 3 dimensions.
- > Good "C" dimension.

Monorail track up to 2,000 kg loads

- > Simple solution for workstations where loads are moved on 2 axes.
- > Movement tracks and simple or complete circuit systems with direction changed by switch or turn table is also available.

With EUROSYSTEM ALU,
Easy movement thanks to
excellent rolling friction
coefficient. ➤





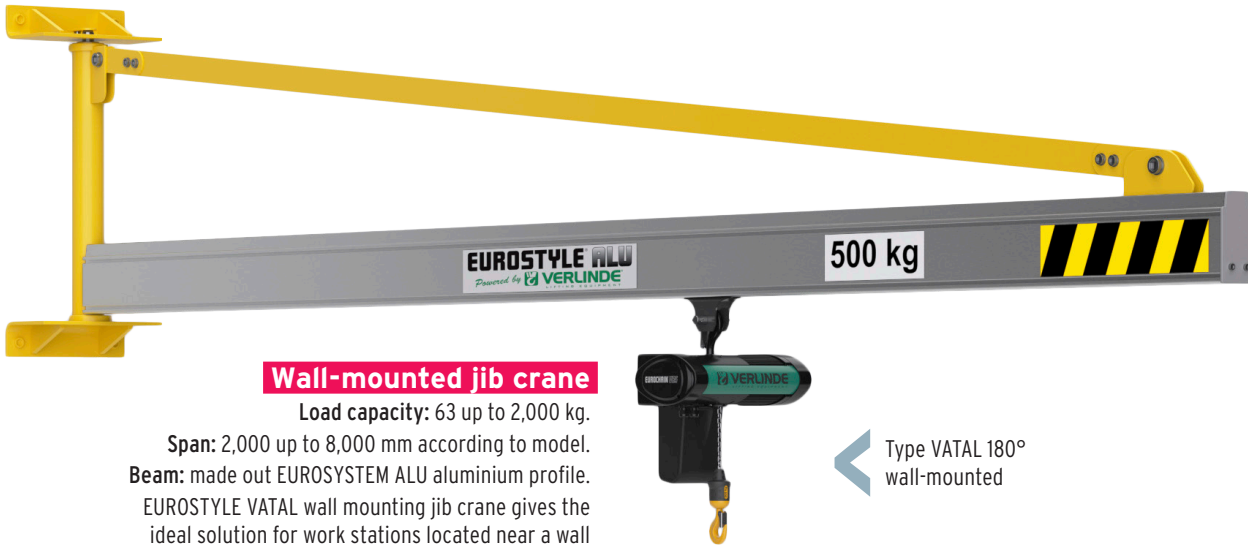
➤ Additional possible declinations



Workshop gantry VGPA

Load capacity: 125 up to 2,000 kg.

- > The beam of these VERLINDE workshop gantries crane consists of a EUROSYSTEM hollow profile in aluminium.
- > Delivered with a manual hoist-bearing EUROSYSTEM type trolley.
- > These workshop gantries are mounted on caster wheels in white polyamide.
- > The gantry can be moved under load.



Wall-mounted jib crane

Load capacity: 63 up to 2,000 kg.

Span: 2,000 up to 8,000 mm according to model.

Beam: made out EUROSYSYSTEM ALU aluminium profile.

EUROSTYLE VATAL wall mounting jib crane gives the ideal solution for work stations located near a wall or vertical structures. It can be used over a sector measuring 180° with a radius between 2 and 8 meters.

They are the complement you can't do without for rolling cranes, for the overall efficiency in a workshop.

They make each production point independent and ultra-efficient.

← Type VATAL 180° wall-mounted



← VFTAL 270° Column mounted jib crane

Pillar jib crane

Load capacity: 63 up to 2,000 kg.

Span: 2,000 up to 8,000 mm according to model.

Beam: made out EUROSYSYSTEM ALU aluminium profile.

EUROSTYLE VFTAL column-mounted pillar jib cranes are necessary when there is no other appropriate support near a work station.

It allows load handling over an area measuring 270° and a radius measuring between 2 and 8 meters.

